



# Embedding the ACT's approach to wellbeing

**BUILDING WELLBEING INTO POLICY AND ACTION IN  
AUSTRALIA – SECOND NATIONAL FORUM**

26 – 28 June 2024

# Next steps in embedding a wellbeing approach in the ACT

At the last of these forums, we focussed on describing the ACT wellbeing framework and its implementation in decision-making processes.

This time we want to focus more tightly on some key aspects of how we're going about embedding a wellbeing informed approach...and why.

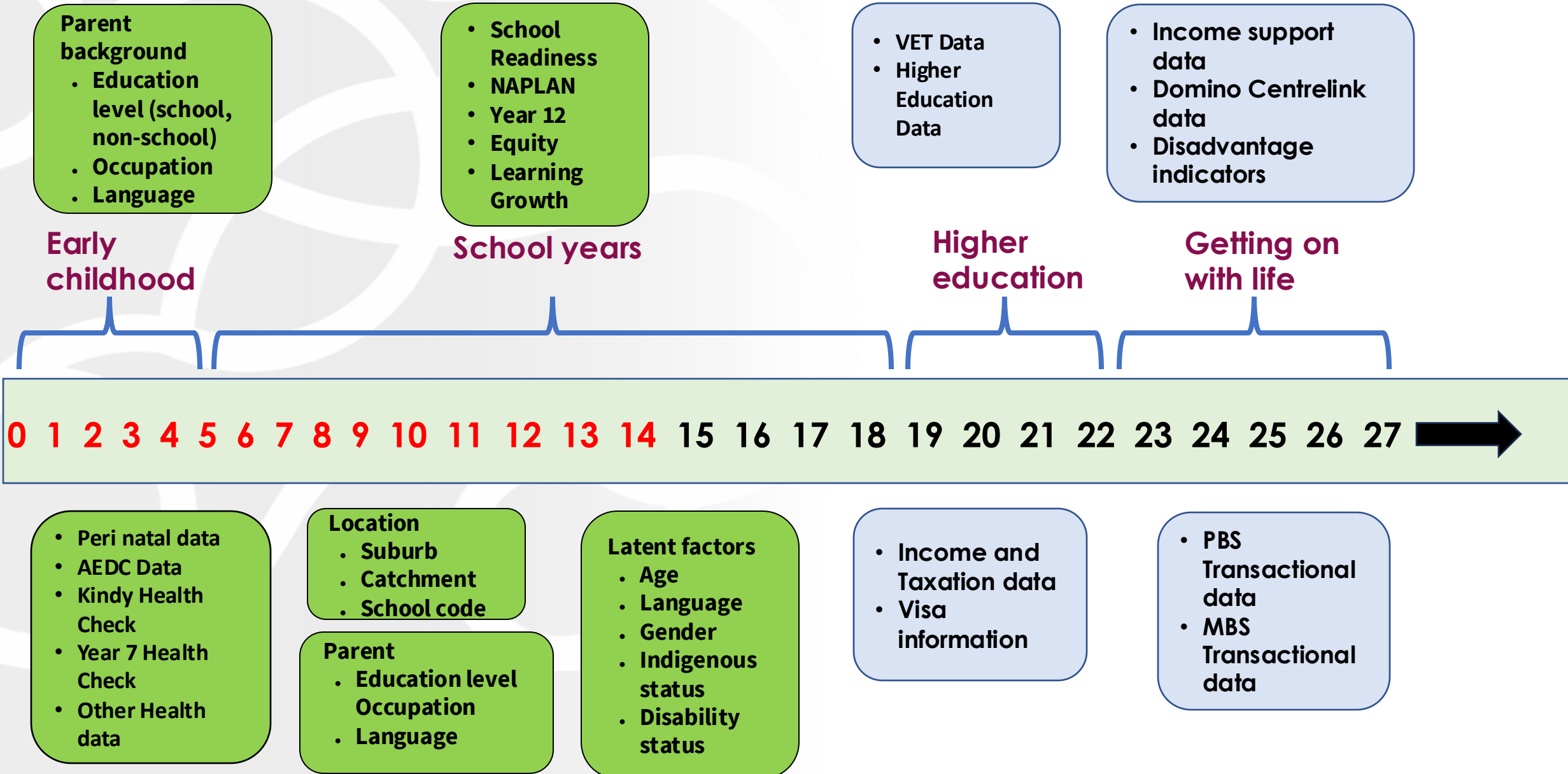


# Evidence infrastructure projects – why they're important

You might imagine that the need for a strong evidence base is self-evident...?

- *Living Well in the ACT Region* survey with the University of Canberra
- A strategic and joint research partnership with the ANU
- The ACT is the Pilot jurisdiction with the ABS (and SA) for the national Life Course Data Initiative
- Development of advanced data analysis techniques in conjunction with Data61

# The Life Course Data Initiative



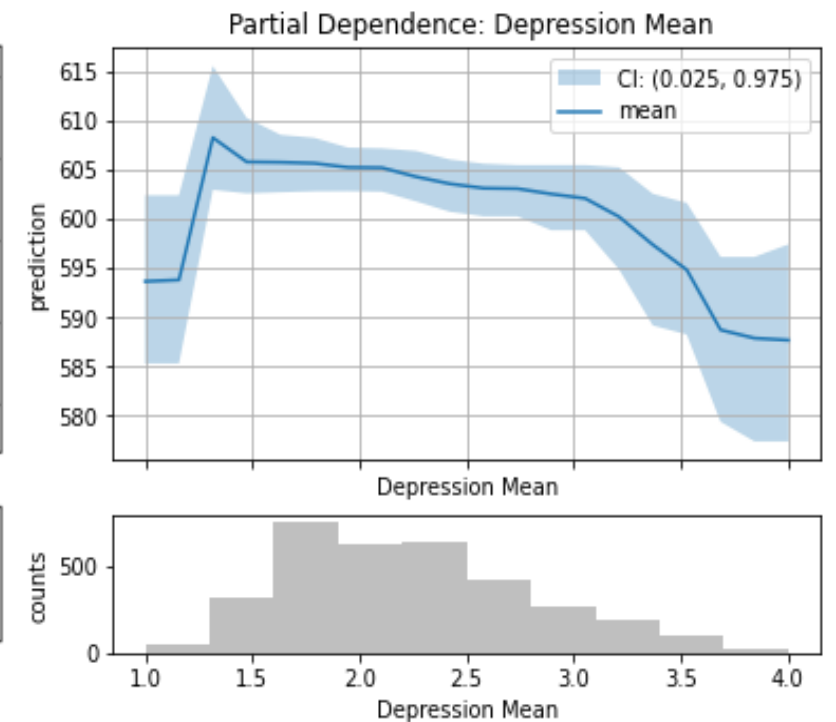
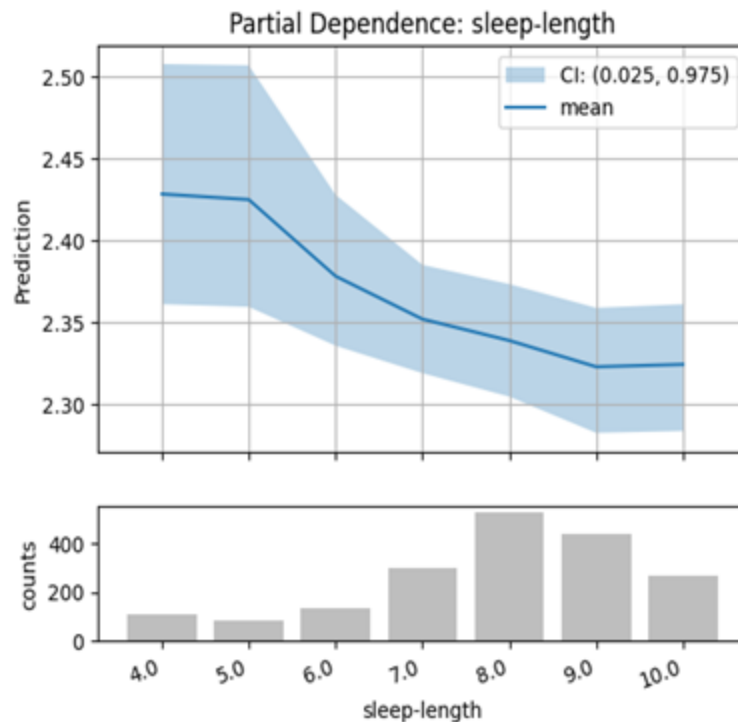
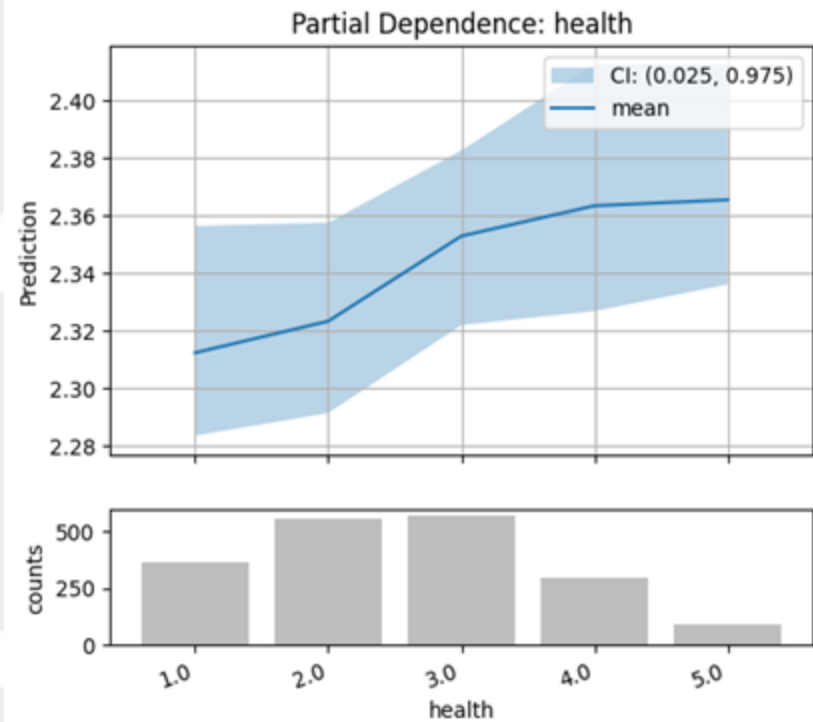
# Life Course Data Initiative – ACT Research Project

- The ACT/ANU research project aims to understand the characteristics of people experiencing disadvantage in the ACT, and the factors that contribute to a person entering, or exiting, periods of disadvantage.
- The project will have particular focus on findings that are actionable to prevent, ease, or end experiences of disadvantage.
- The ACT/ANU research project will explore different ways of measuring disadvantage using the LCDI dataset, building on other work conducted by the ABS and LCDI research partners

# What an enhanced evidence base might deliver...

Non-linear relationships can be explored through linked datasets.

We have tested this by training a gradient boosted tree model on ACT Health and ACT Education data to predict year 9 standardised test outcomes from year 7 health survey data and from year 8 student well-being data.





# Embedding wellbeing in the business of government

The Parliamentary and Governing Agreement (PaGA) for the 10th Legislative Assembly commits to **“examining options to ensuring a holistic approach to budgets, decision-making and reporting including consistent, meaningful and measurable strategic and accountability indicators based on wellbeing”**.



Proposals before Government are being increasingly shaped by wellbeing and the Wellbeing Framework

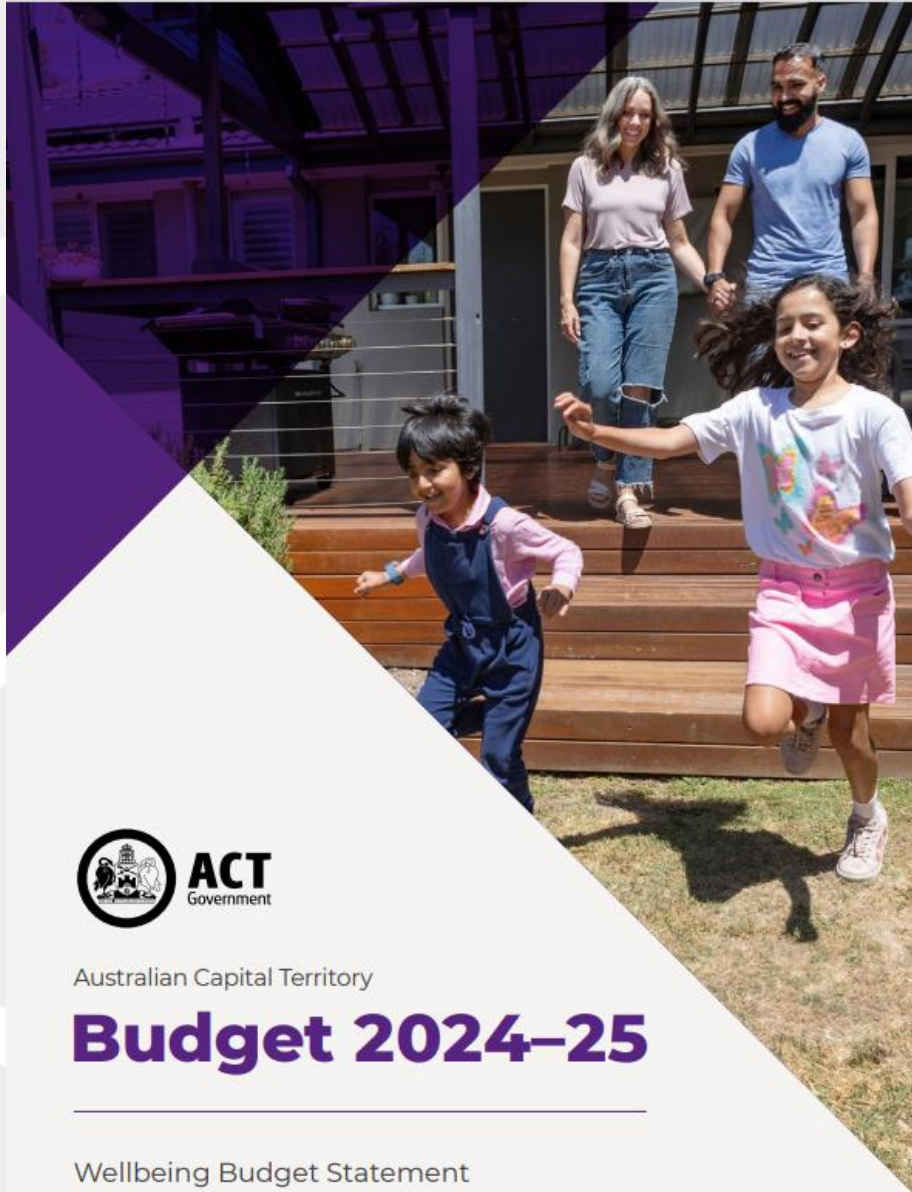
The image shows a document titled 'WELLBEING IMPACT ASSESSMENT'. It contains several sections with headings and bullet points, including 'Purpose of proposal', 'Impact description', 'Who is affected', 'Wellbeing domain', 'Timeframe', 'Evidence base and data', 'What do we need to know?', and 'Accountability and evaluation - how well we know this proposal has been successful?'. The text is small and partially obscured by a blue box at the bottom.

Wellbeing Impact Assessments (WIAs) have been incorporated in Budget and Cabinet processes



WIAs help us understand how issues and proposals might affect wellbeing across our community, environment and institutions

# 2024-25 ACT Budget



Australian Capital Territory

## Budget 2024-25

Wellbeing Budget Statement

‘A government’s first responsibility is the wellbeing of its people.’

“Incorporating a wellbeing approach, measurement and impact assessments into the processes of government is a gradual and a considered effort. The inclusion of this wellbeing statement in our Territory Budget for the first time is a clear signal that we are on this path.”



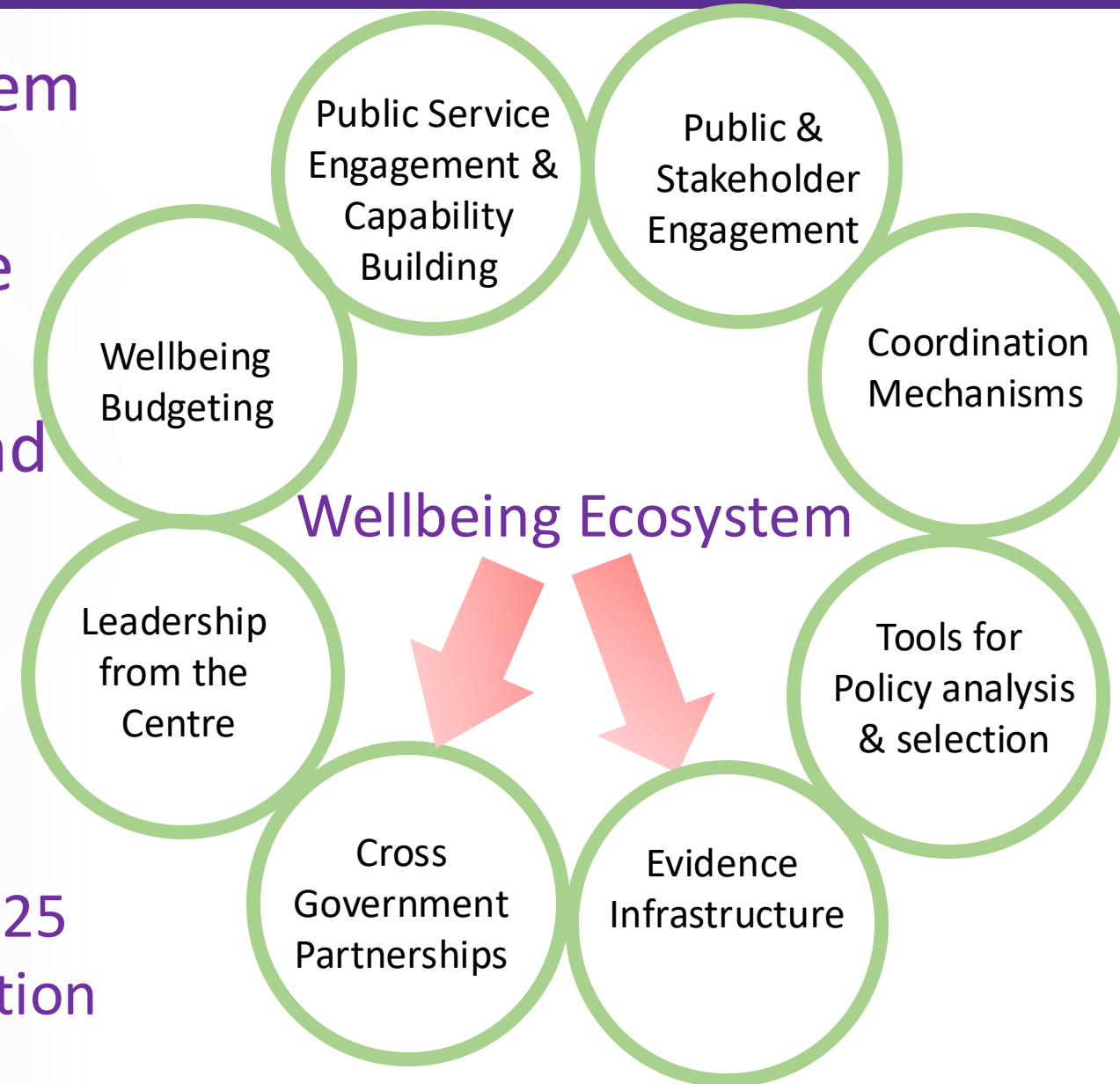
# From here to eternity

- Now broadening our embedding effort – system change
- How do we harness the opportunities of steps to date?
- As CPD says, there are ‘patterns of emerging practice’.
- A focus on outcomes and impacts across domains will encourage greater consideration of the linkages that contribute to wellbeing outcomes.
- Ability to iterate, experiment, trial and improve is important.

# The ACT Wellbeing Ecosystem

We developed a wellbeing ecosystem to describe the key strategies to embedding wellbeing, and to make the best, wellbeing informed, investment decisions. These depend on:

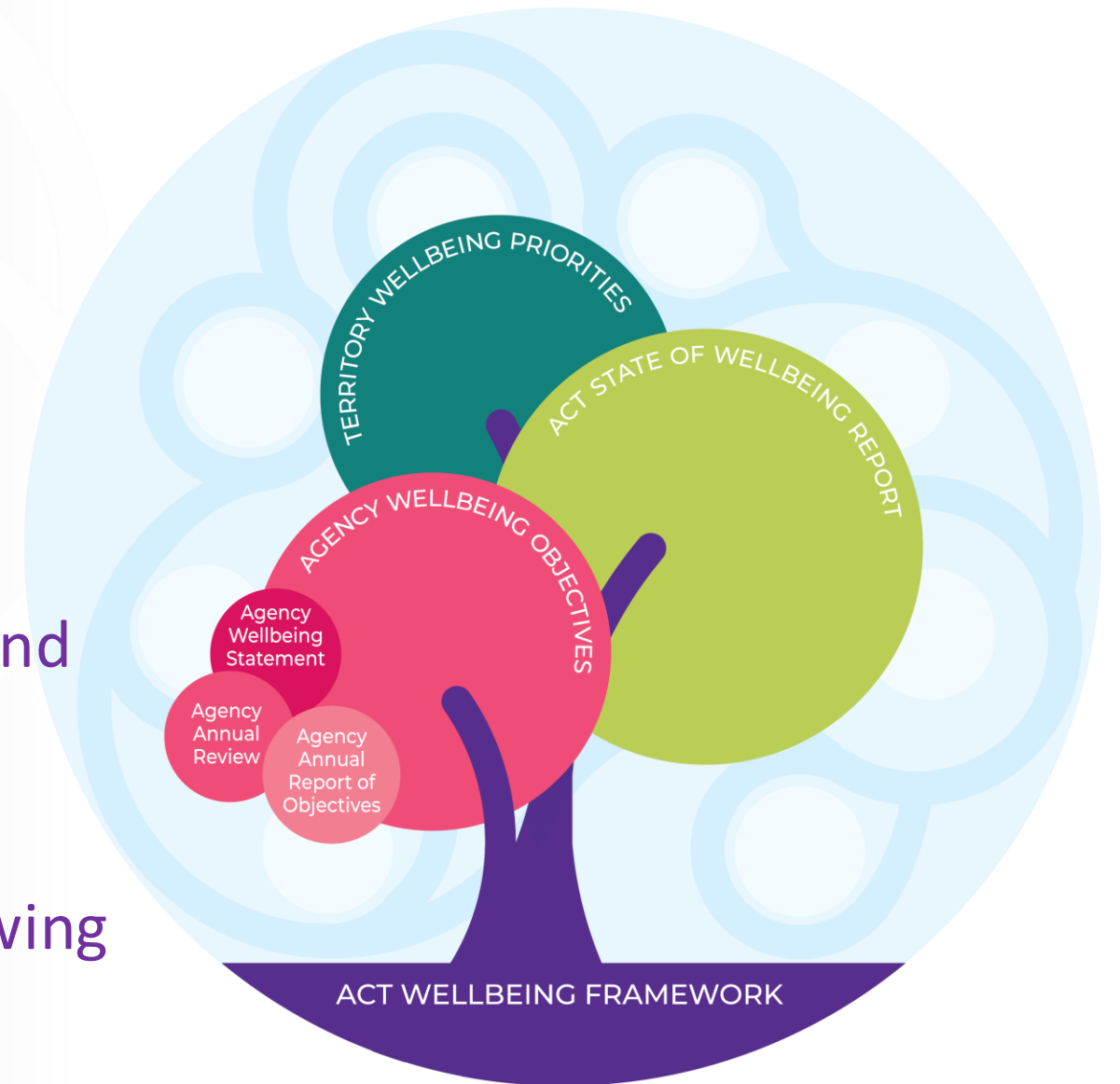
- the quality of the evidence base
- effective cross-government partnerships – for example, the six wellbeing budget priorities for 2024-25 all assume a level of agency cooperation



# Where are we going from here?

Our wellbeing ecosystem is accompanied by a developing wellbeing architecture that will include:

- Progressive development of ACT wellbeing priorities
- Continued development of strategic and accountability indicators based on wellbeing, and
- As the evidence base develops, a growing emphasis on wellbeing in reporting





# Embedding the ACT's approach to wellbeing

**BUILDING WELLBEING INTO POLICY AND ACTION IN  
AUSTRALIA – SECOND NATIONAL FORUM**

26 – 28 June 2024