

June 2024

SGS Cities & Regions Wellbeing Index

Learnings from an objective approach

Presented by Julian Szafraniec



For Aboriginal peoples, Country is much more than a place. Rock, tree, river, hill, animal, human – all were formed of the same substance by the Ancestors who continue to live in land, water, sky.

Country is filled with relations speaking language and following Law, no matter whether the shape of that relation is human, rock, crow, wattle. Country is loved, needed, and cared for, and Country loves, needs, and cares for her peoples in turn. Country is family, culture, identity. Country is self.

- Palyku woman Ambelin Kwaymullina

Overview

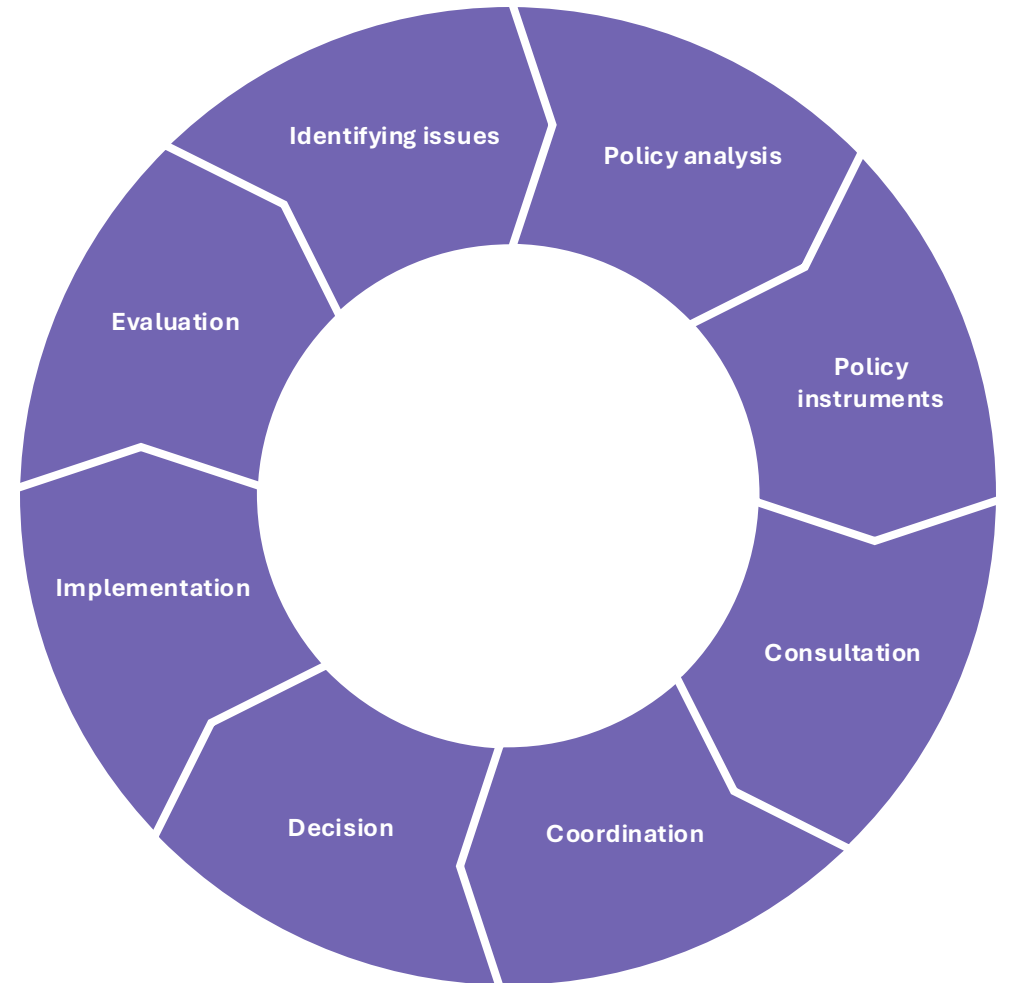
1. Understanding current policy and research gaps in Wellbeing Research
2. SGS Cities and Regions Wellbeing Index
3. Learnings and next steps



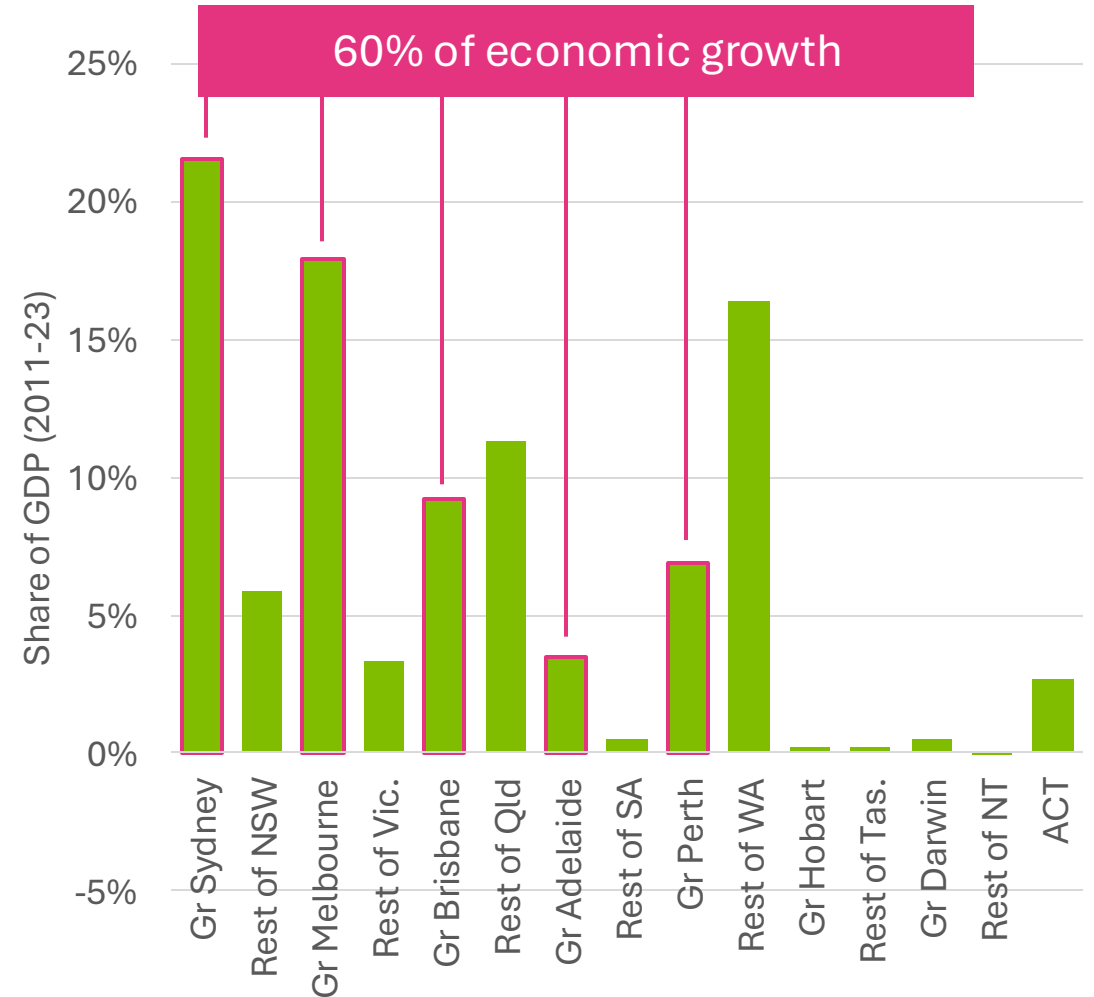
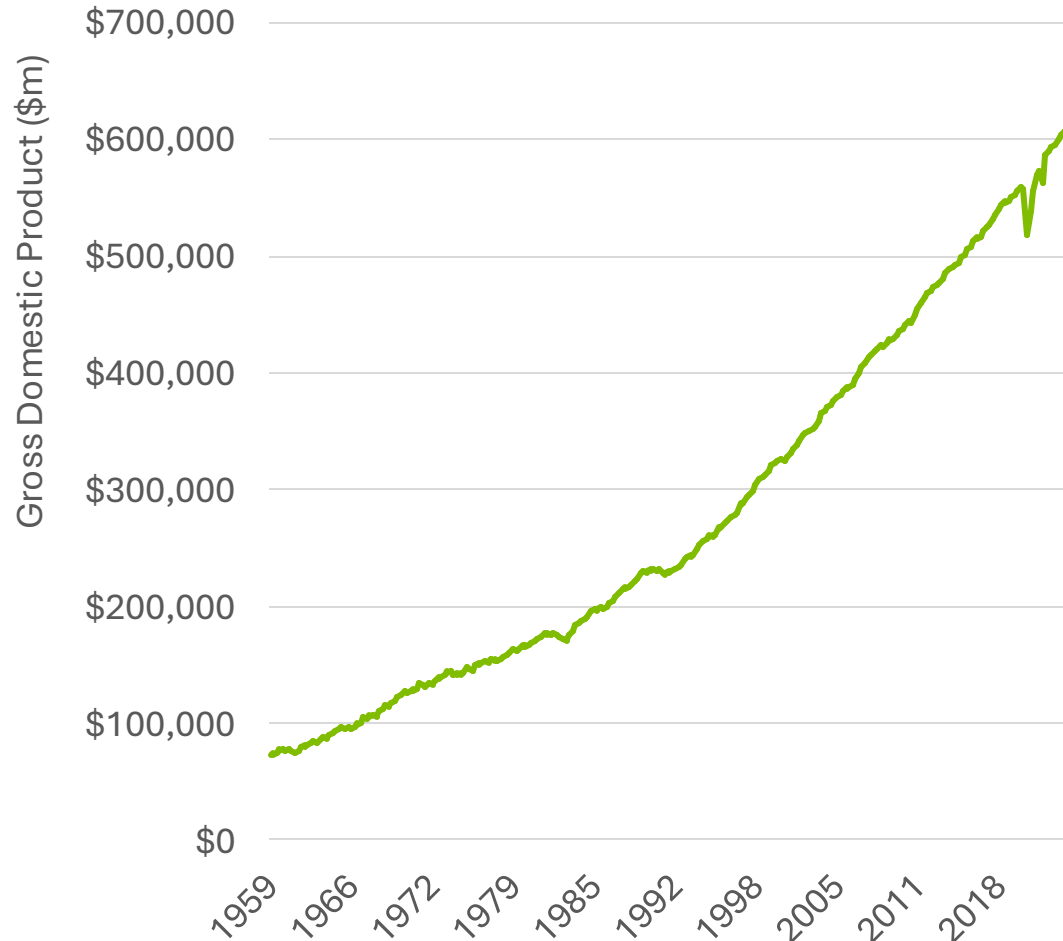
SGS Economics & Planning seeks to influence policy to create a better future

SGS is a certified B Corp and Australian employee-owned firm.

We work for the public interest and aspire to provide Australia's best independent policy advice to improve places and communities



Australia's patch work economic landscape



Policy often focuses on the wrong target...

ECONOMIC DEVELOPMENT STRATEGY 2022 2026

Key targets for 2026

\$13 BILLION
ECONOMY
(GRP)

15,000
NEW JOBS

RECOGNISED
AS A LEADER
IN THE SMART
GREEN
ECONOMY

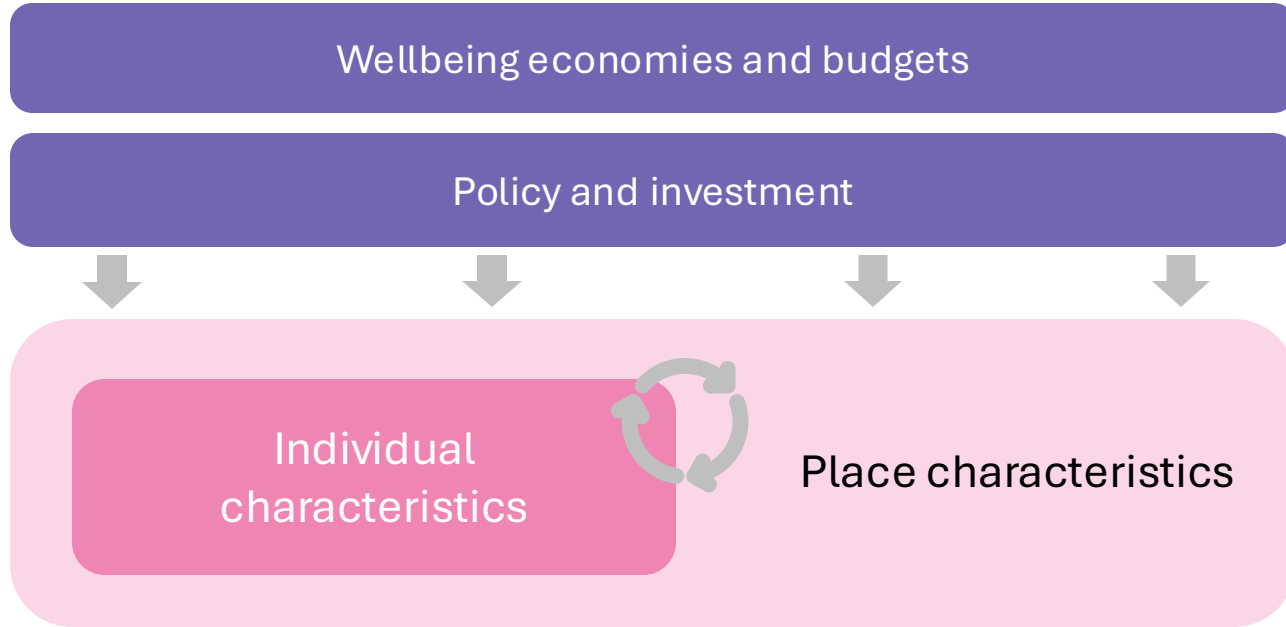
how we measure success

Success will be measured by progress against key economic development metrics, including but not limited to the following:

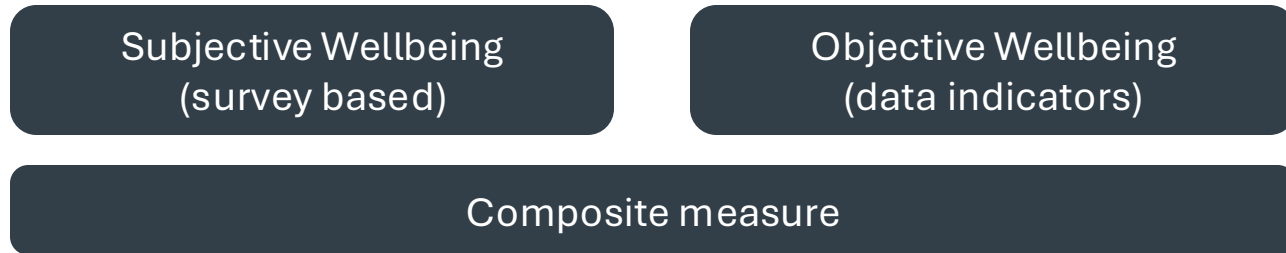
- Jobs and unemployment
- Gross Regional Product
- Priority industry growth
- Key tourism statistics, including visitors and expenditure
- Population growth
- Consumer spending
- Delivery of economic initiatives
- Delivery of major and economic events
- Growth of economic activity in geographic areas of focus

Changing how we measure *success* and *progress*

Wellbeing's
role in policy



Wellbeing
measurement
tools



Adapted from OECD Regional well-being conceptual framework

Wellbeing at the heart of the policy lifecycle

Evaluation: Community wellbeing data is a critical input and often a major data gap, in program evaluations to assess the impacts pre and post intervention

Monitoring: Community wellbeing data may help in the early detection of positive/unintended consequences

Implementation: The availability of reliable community wellbeing data can form part of the communication strategy for new policy interventions, signalling the case for change or rationale for action



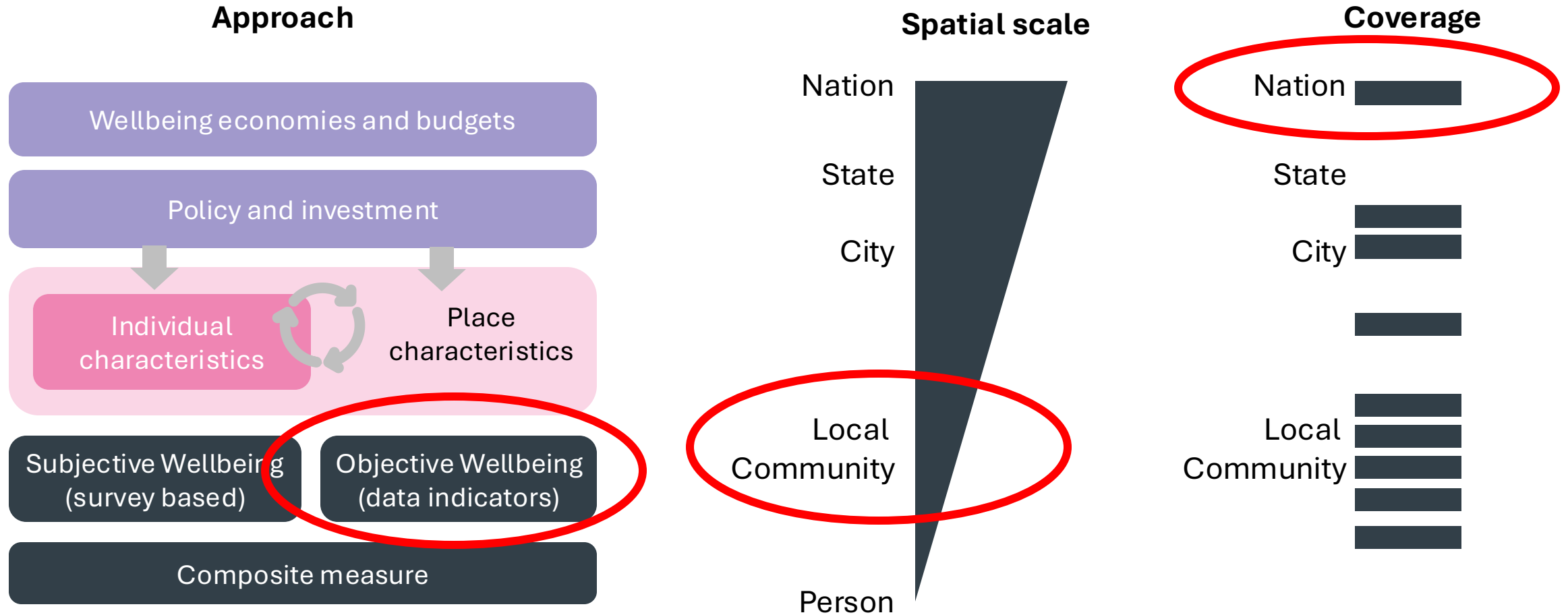
Agenda setting: Trends analysis of wellbeing performance as part of a strategic review of policy goals helps to pinpoint areas requiring intervention

Formulation: Community wellbeing should inform the scope and scale of options, their feasibility, and the selection of policy instruments and levers

Policy lifecycle adapted from Stiglitz et al, 2018

Exploring the SGS Cities and Regions Wellbeing Index

SGS CRWI tries to fill a research gap with a Local Objective Wellbeing Index with National Coverage



Adapted from OECD Regional well-being conceptual framework



SGS Cities and Regions Wellbeing Index

Strong, productive and diverse local **economy**

Protected bio-diversity, reduced **climate** risk and local adaptive capacity

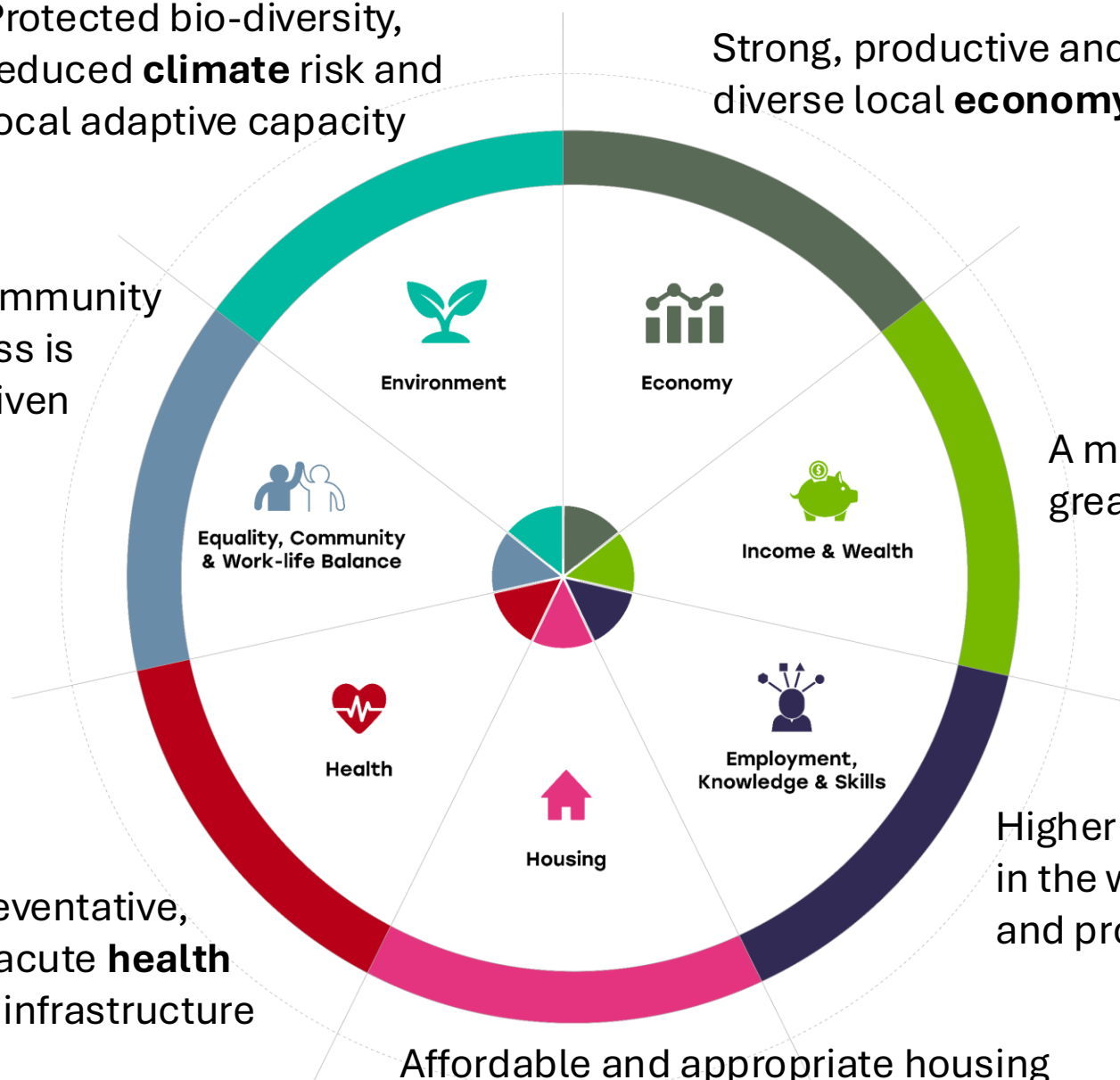
A more **affluent** community with greater financial security and stability

Higher **education** levels and engagement in the workforce, to support social mobility and provide financial and broader satisfaction

Affordable and appropriate housing as **shelter** is a basic human need

Access to preventative, primary and acute **health** services and infrastructure

Balanced community where success is shared and given back into the community



Environment

Economy

Income & Wealth

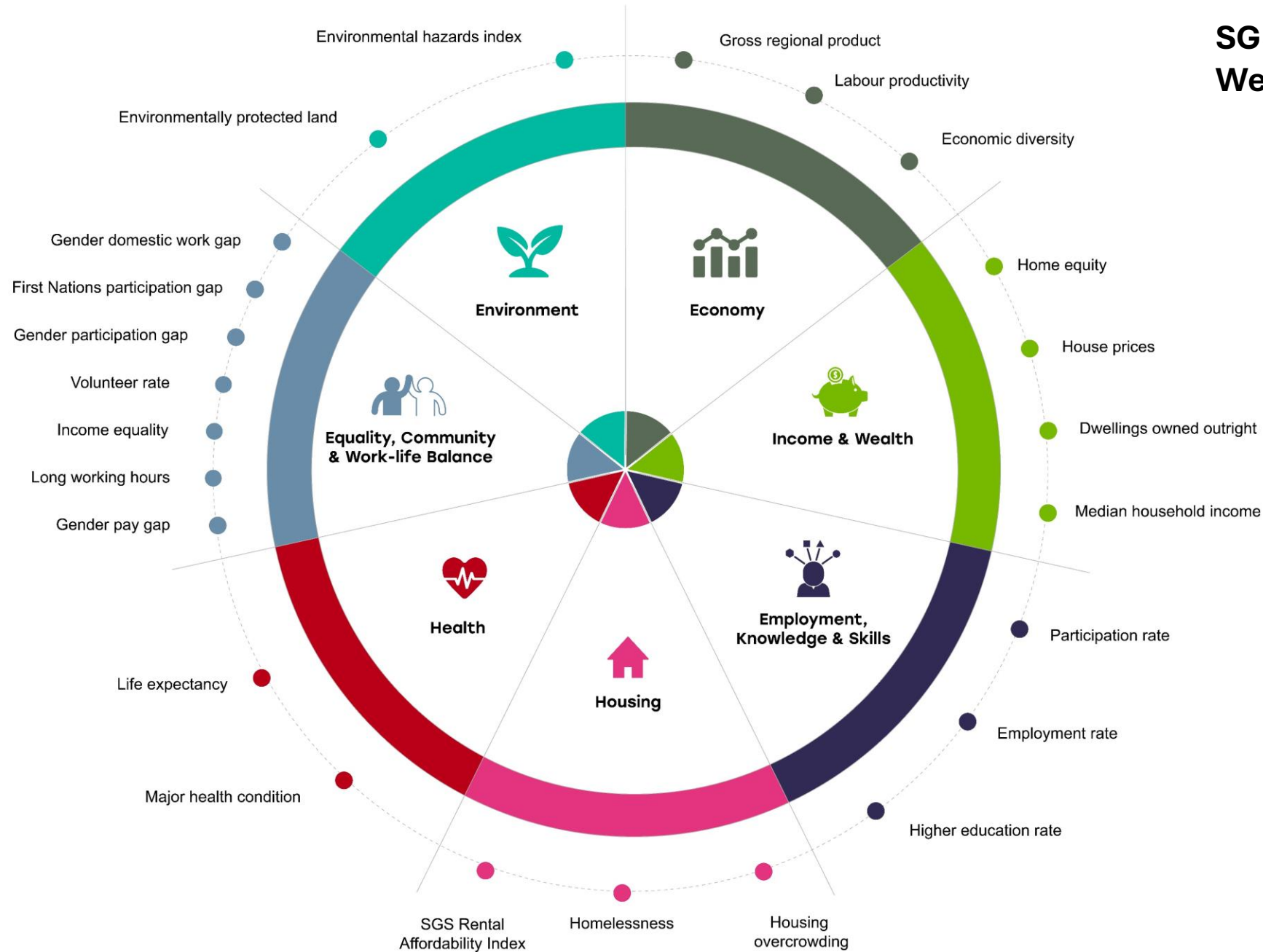
Employment, Knowledge & Skills

Housing

Health

Equality, Community & Work-life Balance

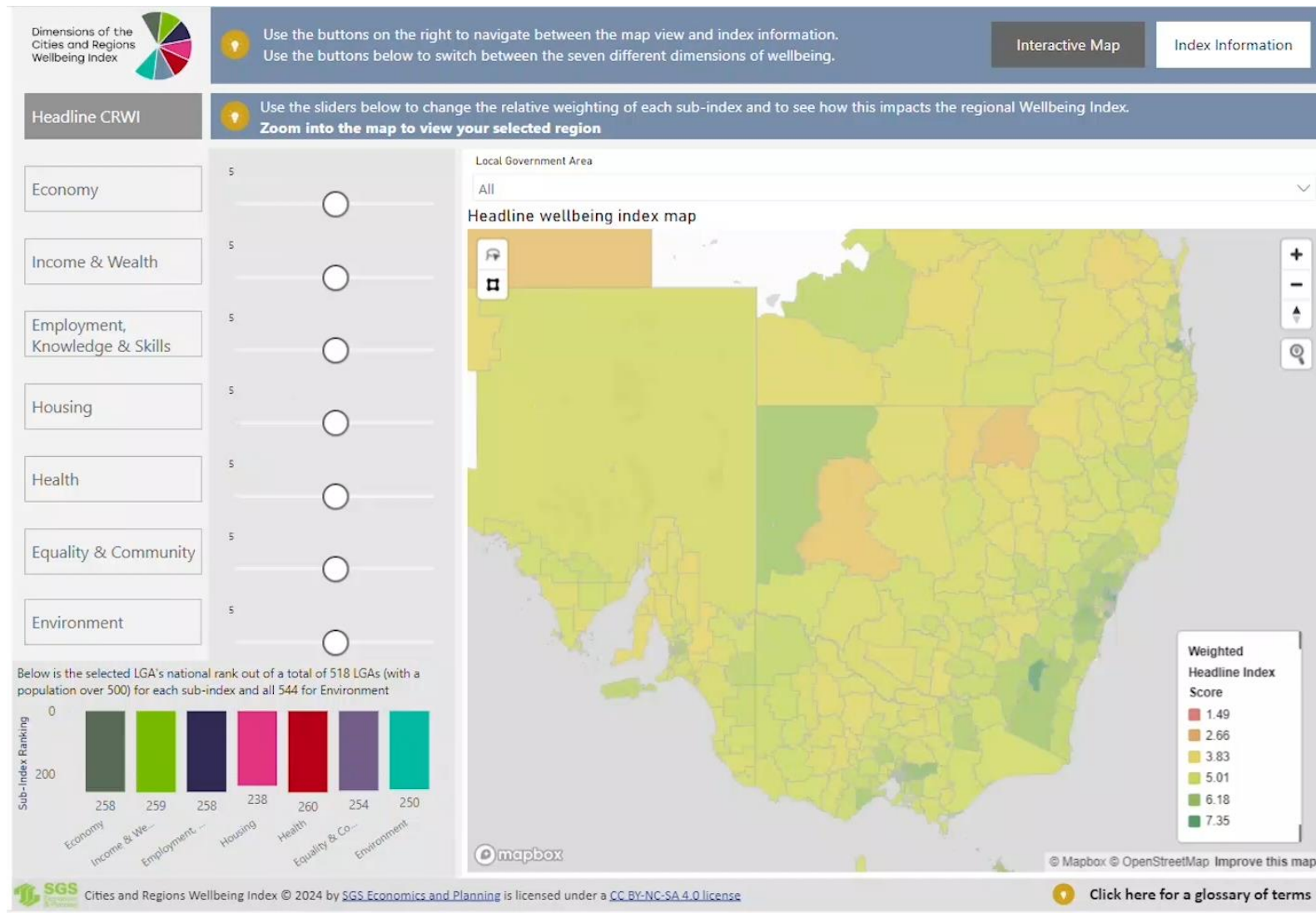
SGS Cities and Regions Wellbeing Index



- National Coverage
- LGA scale
- 7 Dimensions
- 24 Indicators
- Updated annually

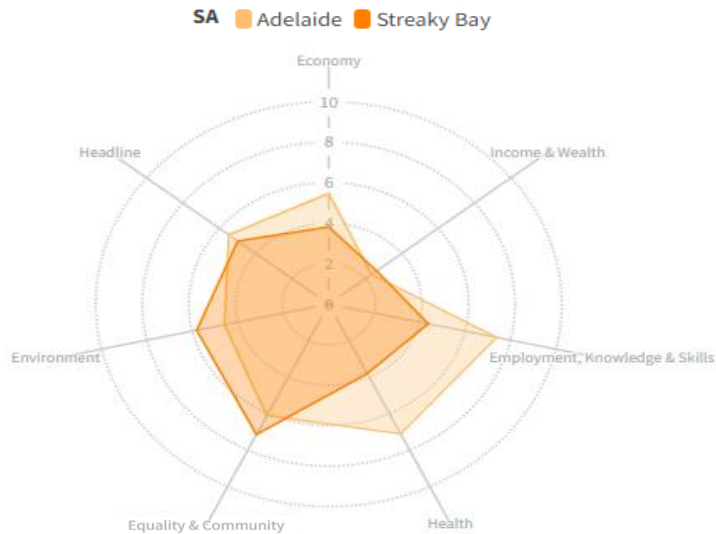
Key findings from the 2023 SGS CRWI

- **Where** you live influences your experience of Australia and the factors that impact your level of wellbeing
- A **clear divide** exists between the greater capital cities and the rest of state regions
- But **this isn't consistent**. Where you live in the city or regional areas or what you care about is more important.



Key findings from the 2023 SGS CRWI

- Rather than simply focusing on jobs and growth.
- Wellbeing starts to show alternative pathways to a more sustainable prosperity



Dimensions of the Cities and Regions Wellbeing Index

Use the buttons on the right to navigate between the map view and index information. Use the buttons below to switch between the seven different dimensions of wellbeing.

Interactive Map Index Information

Headline CRWI

Use the sliders below to change the relative weighting of each sub-index and to see how this impacts the regional Wellbeing Index. Zoom into the map to view your selected region

Local Government Area: All

Headline wellbeing index map

Weighted Headline Index Score

1.49
2.66
3.83
5.01
6.18
7.35

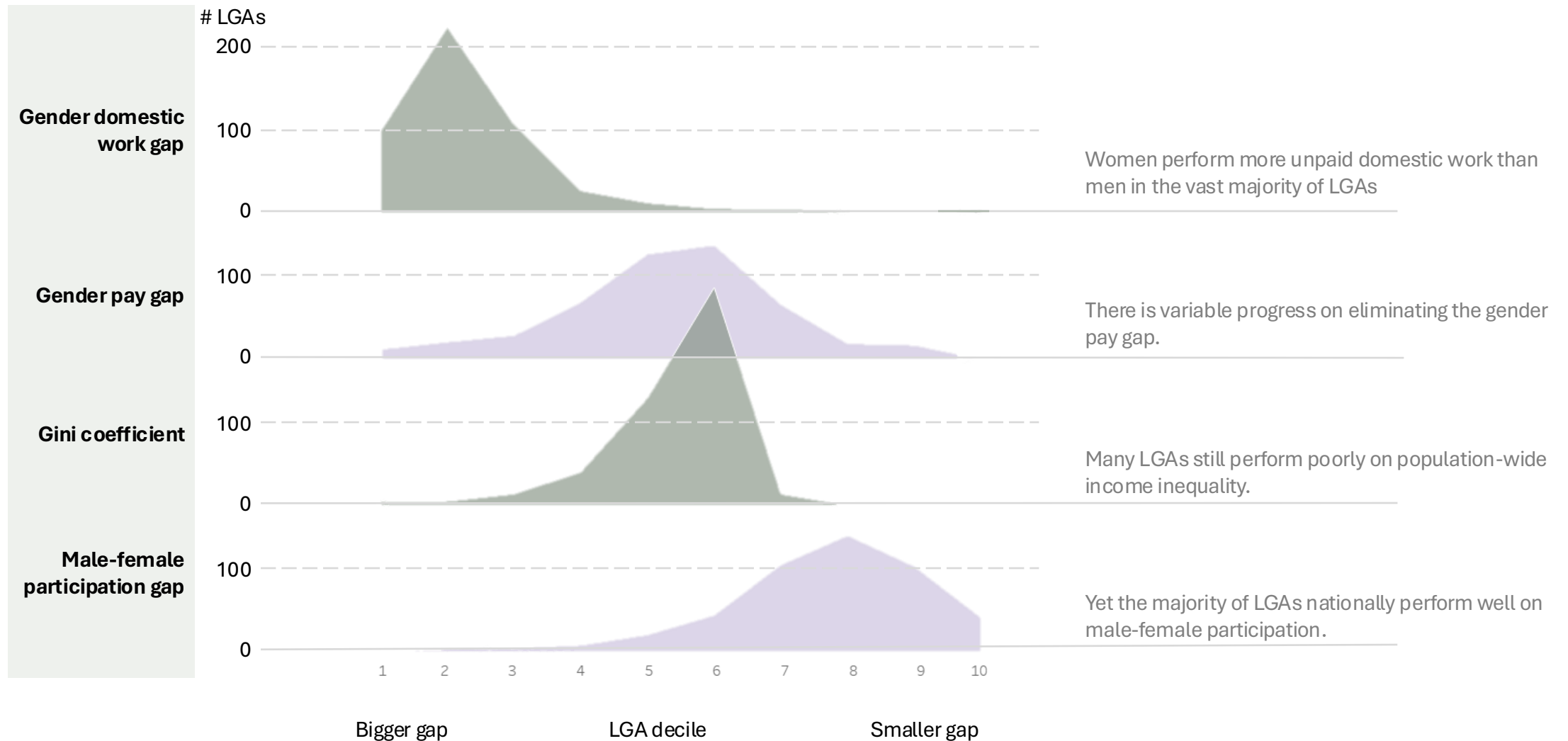
Below is the selected LGA's national rank out of a total of 518 LGAs (with a population over 500) for each sub-index and all 544 for Environment

Sub-index	Rank
Economy	258
Income & Wealth	259
Employment, Knowledge & Skills	258
Housing	238
Health	260
Equality & Community	254
Environment	250

SGS Cities and Regions Wellbeing Index © 2024 by SGS Economics and Planning is licensed under a CC BY-NC-SA 4.0 license

Click here for a glossary of terms

The many facets of gender pay gap inequality



Rental affordability, at what cost?

- Areas with high unaffordability often had higher Wellbeing scores in economy, skills and health, in particular.
- Highlights that people are making trade-offs to try and get into some communities
- The housing crisis is not simply about providing more houses *anywhere*.
- Its about the right type of housing in places with good access to jobs and services

Rental Affordability by remoteness, States and Territories 2023

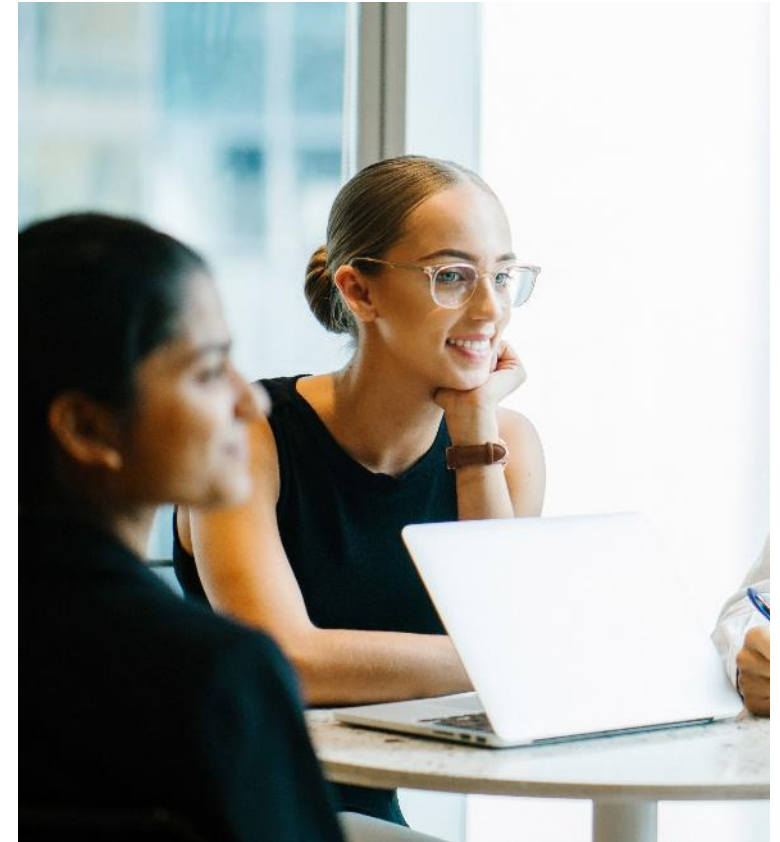


Learnings and what's next for the CRWI?

Nationally consistent local data is not easy to source

CRWI is a starting point, not an end solution

- Used the (7 CRWI dimensions) framework to drive what indicators we needed, with a view to refine each dimension (and indicator) over time.
- Most indicators currently sourced (or derived) from ABS sources.
- Key gaps/opportunities in Environment, Health and Access
- Important to remove outliers, small samples and normalise indicators, so they could be compared and combined.



Providing a simple entry point..

One of the strengths of 'GDP' is it boils down all the complexity of the market-based economy into a single number.

Because Wellbeing is subjective and complex, many efforts resist the urge to create a single composite index.

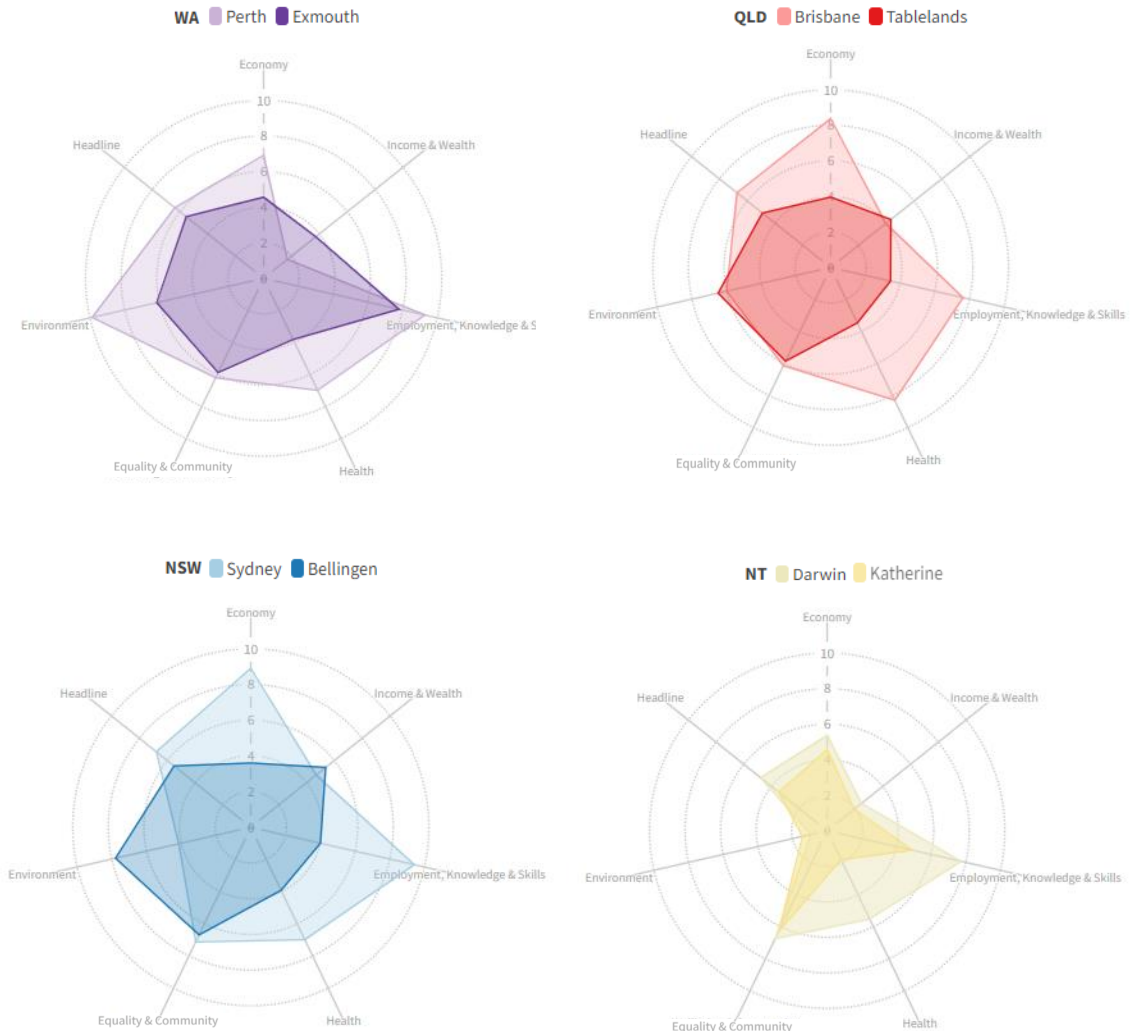
BUT! a composite index can help create an 'entry point' for those not engaged in Wellbeing Economics.



Providing a simple entry point.. but not an end point.

‘Rankings’ can provide the simplest overview but can hide the complex story beneath...

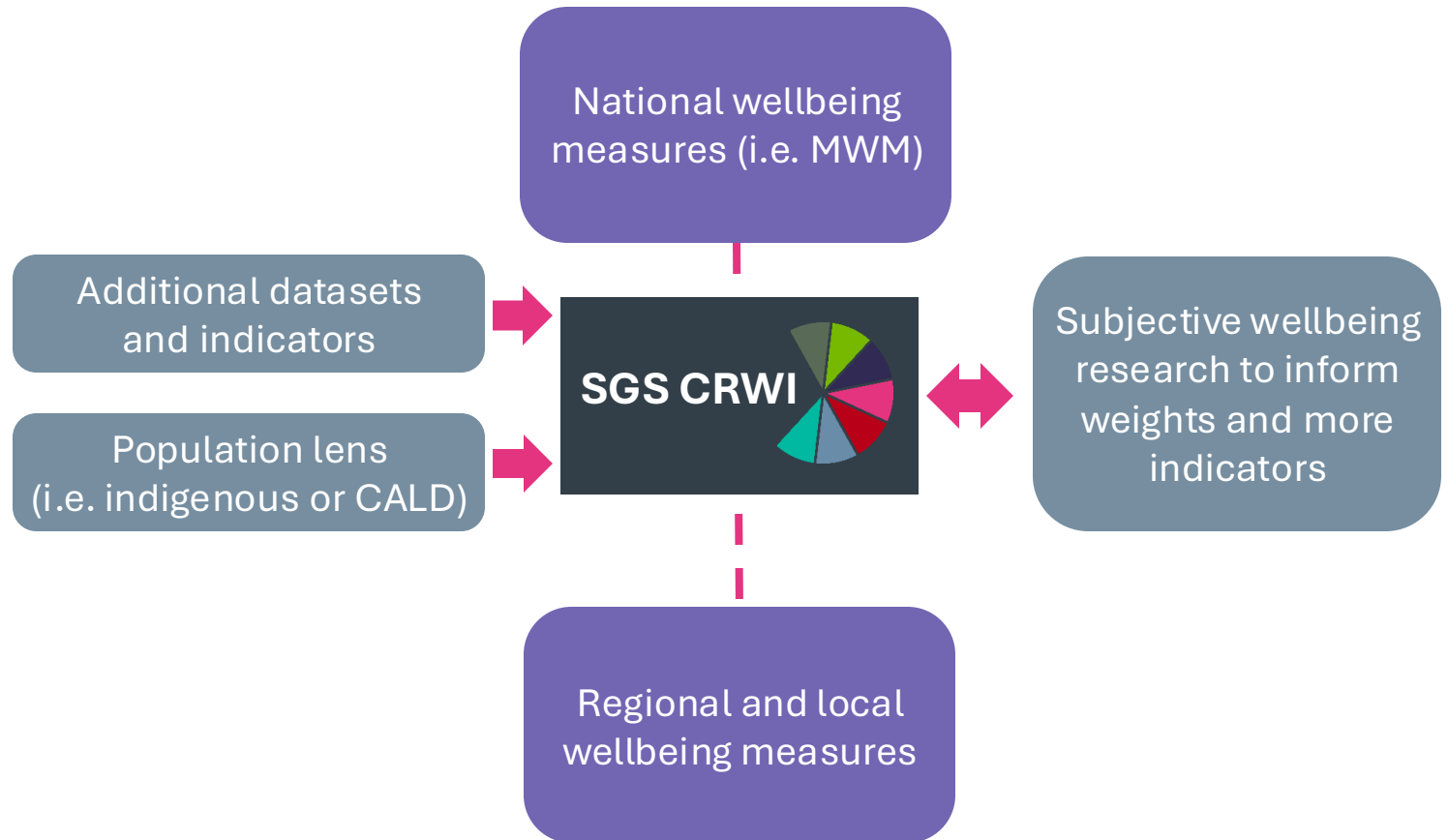
Economic Overview 2023 GRP (\$b) and 3-year average annual growth (%)				Wellbeing Overview 2023 Cities and Regions Wellbeing Index (headline)				
	State / Territory	Capital City	Rest of State	Summary	Capital City	Rest of State	Highest headline wellbeing score	Lowest headline wellbeing score
NSW	\$733.1 (2.9%)	\$525.7 (3.0%)	\$207.4 (2.5%)	Strong growth in the services sector in Sydney, driven by hospitality and transport. Mining and transport-led regional growth.	6.0	5.1	<ul style="list-style-type: none"> Northern Beaches North Sydney Ku-ring-gai Hornsby Lane Cove 	<ul style="list-style-type: none"> Walgett Moree Plains Coonamble Narromine Federation
VIC	\$535.5 (2.9%)	\$424.8 (2.9%)	\$110.7 (3.2%)	Strong growth in Melbourne, led by the hospitality and transport sectors, outweighed a marginal decline across Regional Victoria.	5.7	5.0	<ul style="list-style-type: none"> Melbourne Nilumbik Yarra Port Phillip Yarra Ranges 	<ul style="list-style-type: none"> Loddon Central Goldfields Buloke Pyrenees Latrobe
QLD	\$464.6 (3.6%)	\$209.8 (4.9%)	\$254.8 (2.5%)	Brisbane outpaced the regions, led by strong growth in transport, professional services, and hospitality. In regional Queensland, a decline in mining production was outweighed by growth in other sectors: transport, public administration, and agriculture.	5.7	4.9	<ul style="list-style-type: none"> Brisbane Noosa Douglas Redland Gold Coast 	<ul style="list-style-type: none"> Yarrabah Palm Island Northern Peninsula Torres Strait Island North Burnett
SA	\$134.2 (4.8%)	\$100.5 (4.6%)	\$33.7 (5.4%)	Regional South Australia was the fastest growing sub-region in Australia, led by increased mining and agricultural outputs. Adelaide benefited from an increase in tourism and strong growth in the construction sector.	5.3	4.5	<ul style="list-style-type: none"> Mitcham Burnside Unley Adelaide Hills Prospect 	<ul style="list-style-type: none"> Mid Murray Anangu Pitjantjatjara Yunkunytjatjara Yorke Peninsula Port Augusta Barunga West



Next steps and how the SGS CRWI fits into the broader wellbeing measurement ecosystem

There is no 'single' or 'correct' wellbeing measurement approach

The focus should be on changing how we all measure, plan and track success and progress.



**Explore the
report and
interactive
dashboard**

