



Australian Child and
Youth Wellbeing Atlas

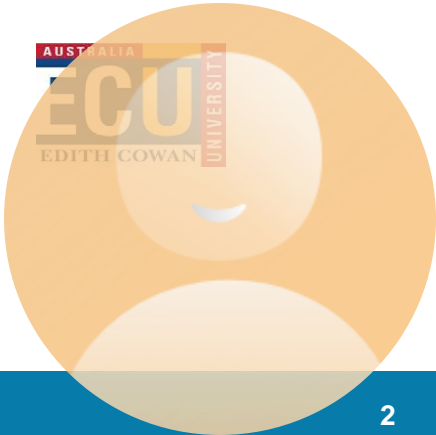


THE AUSTRALIAN CHILD AND YOUTH WELLBEING ATLAS: Democratising data for improved decision making and advocacy

A/Prof Rebecca Glauert and Marketa Reeves, School of Population and Global Health, UWA

Partnerships

The Australian Child and Youth Wellbeing Atlas represents a significant partnership of researchers, policy makers, philanthropic organisations, clinicians, government, community advocates and children and young people.



The need

- Our children and young people are not doing as well as they should be in “the land of plenty”
- We are facing the prospect of leaving our future generation worse off than the generation before them- this is not a legacy we want to leave behind!



The need

- Data on children and young people are held in a multitude of disparate locations across the country and jurisdictions.
 - This makes it impossible to achieve a comprehensive picture of children and young people without significant effort (and money).
 - Without a complete understanding of children's wellbeing, effective, efficient, and evidence-based decisions are unattainable.
-
- Policy makers, researchers, service providers and community members require access to robust data on children and young people.
 - Where children live - their community - is important
 - There is no one single source where people can access data on children and young people.
 - Significant FTE is expended across Government, research, NGO's, and communities to try to access data that are 'locked up'



Introduction

The Australian Child and Youth Wellbeing Atlas maps data on children and young people aged 0 to 24 across Australia.

This new data asset is free, holistic and promotes equitable accessibility.

The Atlas enables and accelerates:

- **access**
- **visualisation**
- **analysis, and**
- **monitoring**

of health and wellbeing metrics for children and young people across our country.



The impact

Access to geospatially mapped data will:

1. Inform policy, investments, and planning at all levels
2. Enhance evidence-based decision-making
3. Monitor child health and wellbeing, even at the community level
4. Adjust resource allocation where needed
5. Promote cost efficiencies
6. Increase accountability and transparency
7. Detect emerging trends and promptly address child health needs.
8. Evaluate the impact of events like COVID-19.
9. Improve the health and wellbeing of Australian children and young people



The approach

- Eliminate obstacles that hinder equitable access to data on children and young people.
- Foster an evidence-driven environment for monitoring the health and overall welfare of young Australians.
- Create a strong national partnership of state and federal organisations, researchers, policy makers, and non-government agencies.
- Provide an interactive mapping tool that utilises geographic information system (GIS) technology to visualise data across all key wellbeing indicators for children and young people.

We anticipate this will result in significant efficiencies across government and non-government, in service and program delivery and result in improved health and wellbeing outcomes for children, young people and their families.



Privacy

- No individual data are displayed (or accessible by users).
- Data is visualised to agreed levels of aggregation (e.g., suburb (SA2), SA3, Local Government Area or other).
- Suppression of low counts and populations.
- Withhold rate estimates from areas with small populations (or aggregate up).

The indicators

The Atlas project defines children's health, development, and wellbeing based on the Nest framework, an evidence-based model developed by the Australian Research Alliance for Children and Youth (ARACY).

This framework encompasses six wellbeing domains or themes.

A seventh domain (*Sustainable environments*) is planned to be included.



Healthy



Material basics



Valued, loved and safe



Learning



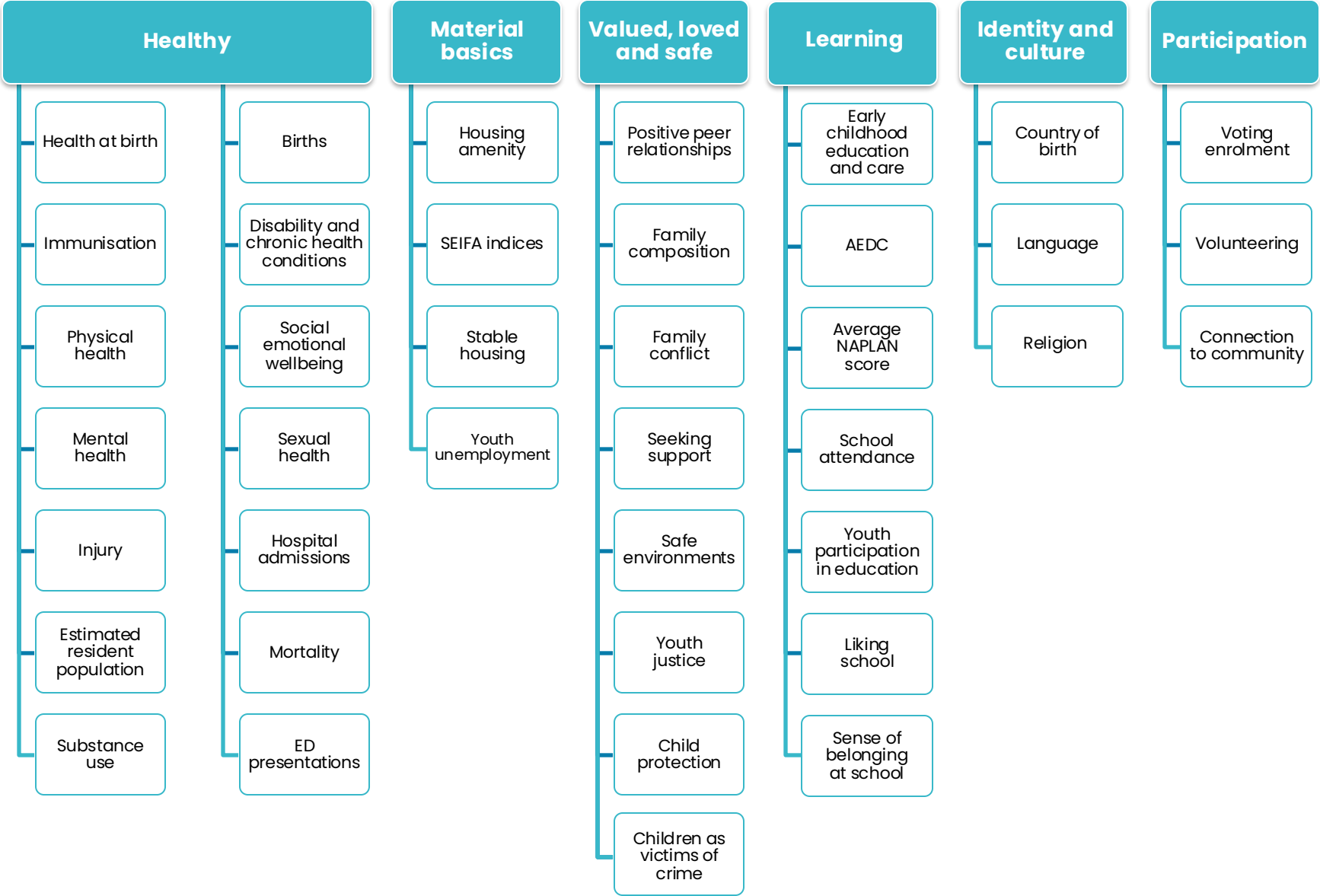
Participation



Positive sense of identity and culture

- Children and Young People Advisory Group
- Aboriginal data governance and sovereignty

The Nest domains



Measuring what matters??

Access to education, skills development and learning throughout life

Indicator	Metric	Why this metric	Progress	Latest Value ⁽ⁱ⁾
Childhood development	Proportion of children who are developmentally on track in all five domains of the Australian Early Development Census ^(a)	Early childhood development is a key determinant of future health, wellbeing and prosperity	Improved 2009–2021	54.8%
Literacy and numeracy skills at school	Average Year 3 NAPLAN scores for literacy and numeracy ^(b)	Literacy and numeracy skills developed during school years are critical to participating in all aspects of life.	Improved 2008–2022	Mixed results across curriculum areas
Education attainment	Proportion of people aged 20–24 with Year 12 or equivalent	Education attainment shows the education status of Australia and provides a measure of the skills and capabilities of the population	Improved 2013–2022	86.2%
	Proportion of people aged 25–34 with a qualification at Certificate III level or above ^(c)		Improved 2013–2022	73.0%

Contact



Australian Child and Youth Atlas platform

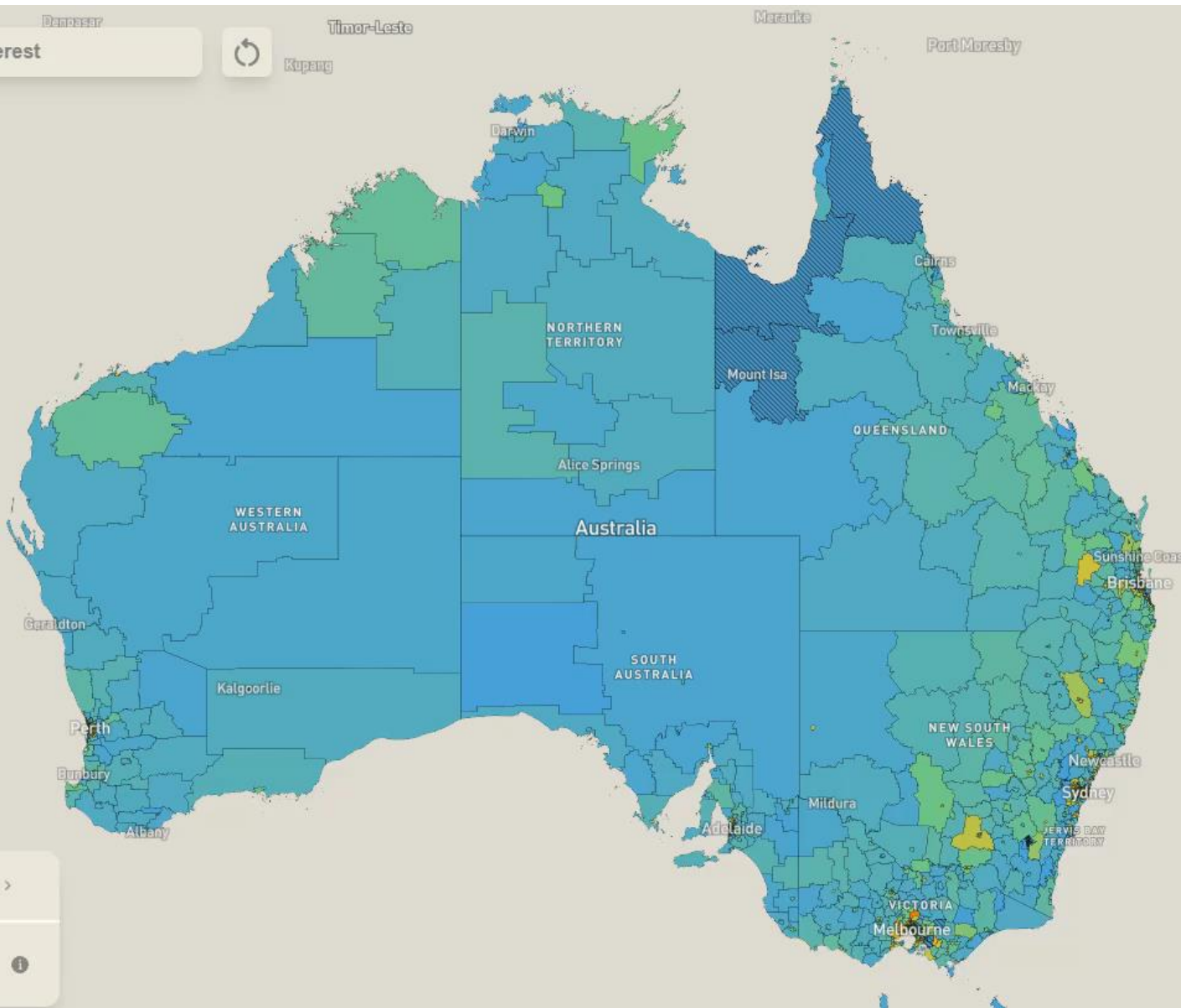
Website: www.australianchildatlas.com

Contact us: info@australianchildatlas.com





Enter a region of interest



Themes **Age & Sex**

Age: 0 - 0 Sex: A Date: 2022 Area: SA2

Themes

Healthy > Health at birth >

Births

Births to mothers aged 15-19 - 3 year prior moving avg (%) (WA only)

Births to mothers aged 15-19 - 5 year prior

Select a region >

Select a theme to explore the data

Healthy > Health at birth > Births >

Number of births (N) ⓘ

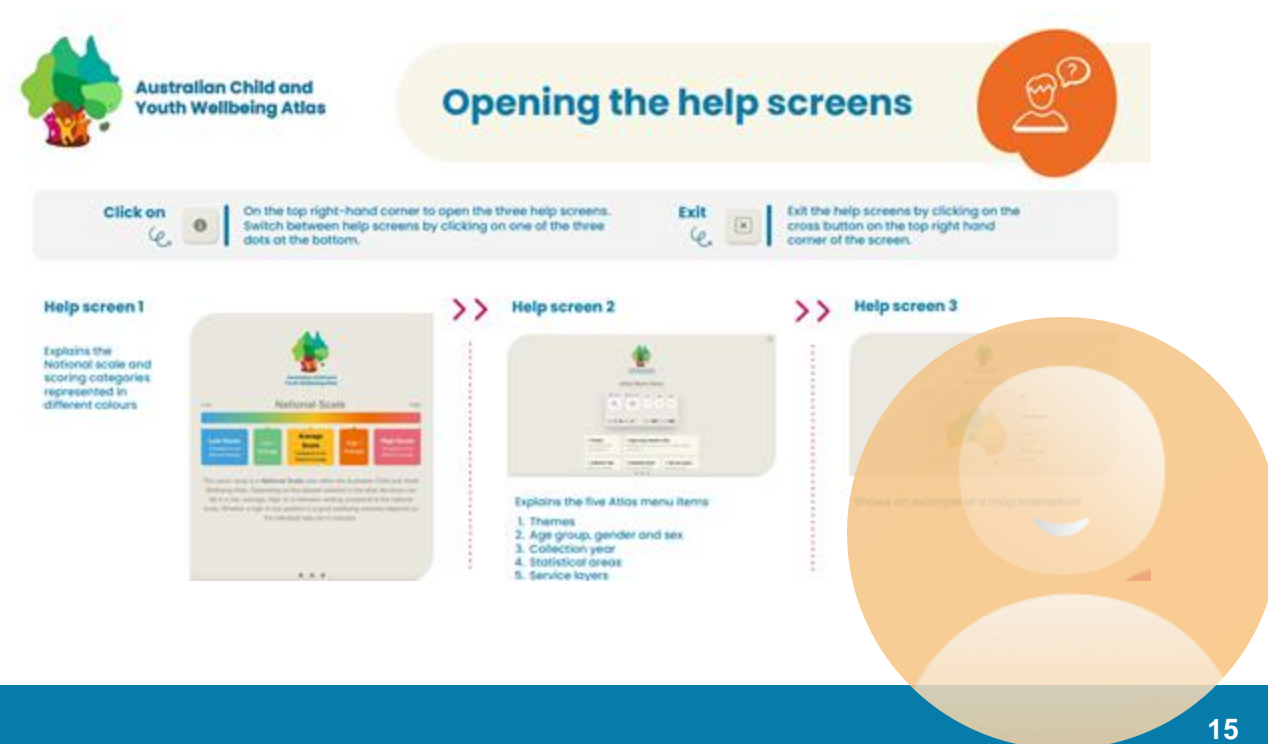
Auckland
Hamilton



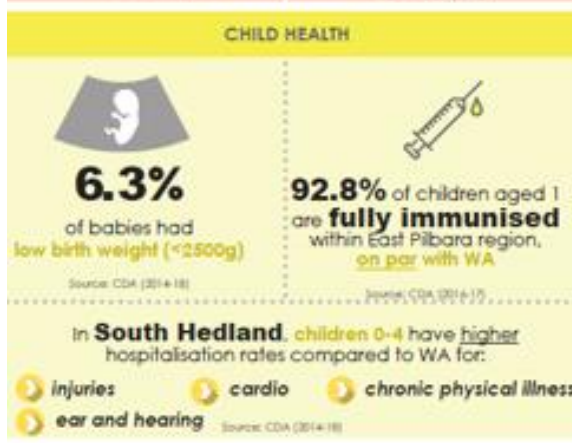
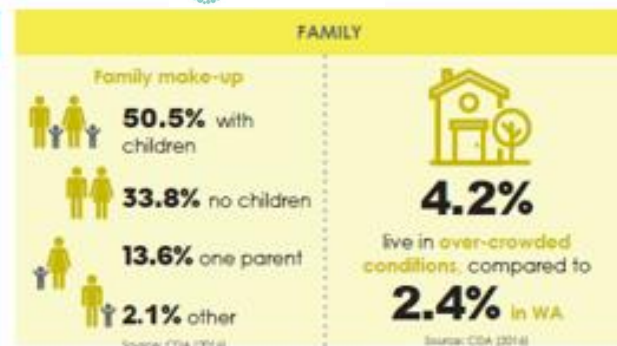
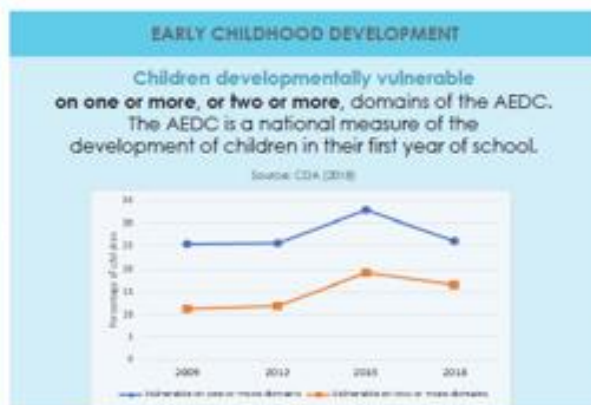
Other resources

Additional Atlas resources are available through the main website: www.australianchildatlas.com

- **Indicators information** – description and policy context
- **Technical information** – metadata, technical methods, statistical areas, visualisation, licensing
- **User guides**



SOUTH HEDLAND CPC DATA SNAPSHOT



Next steps

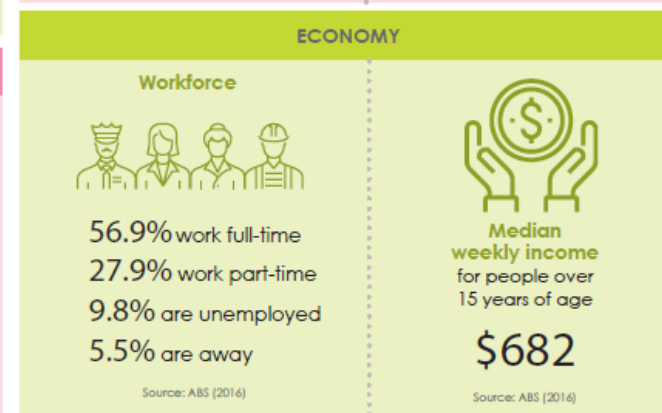
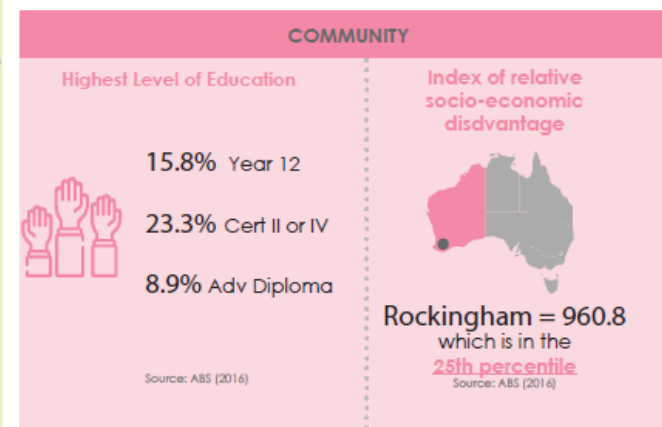
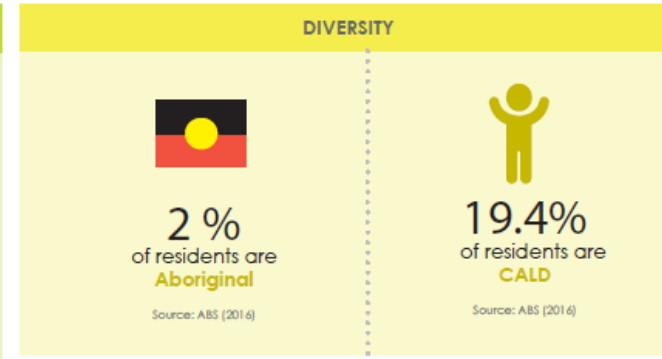
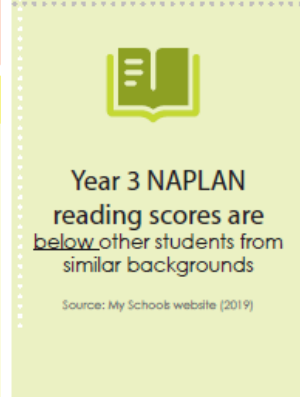
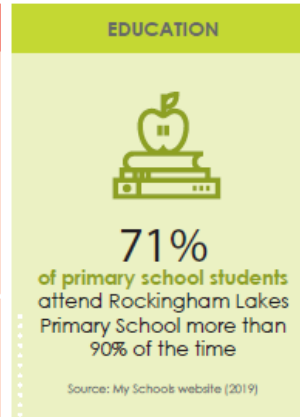
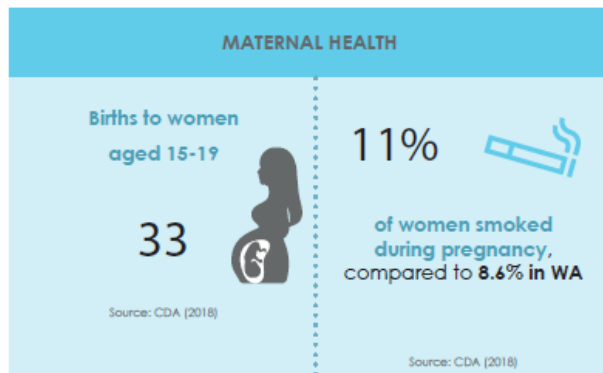
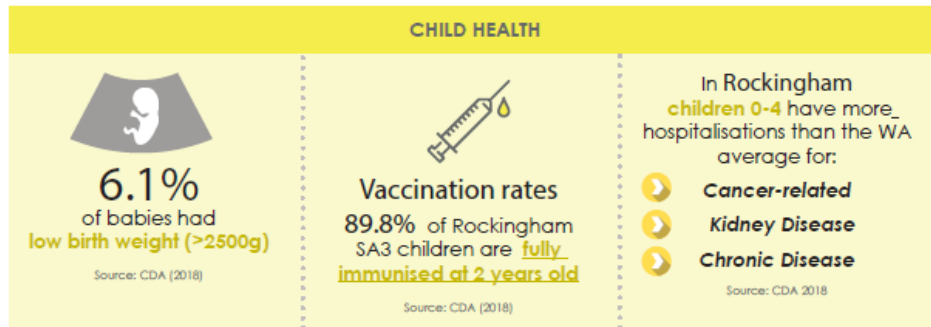
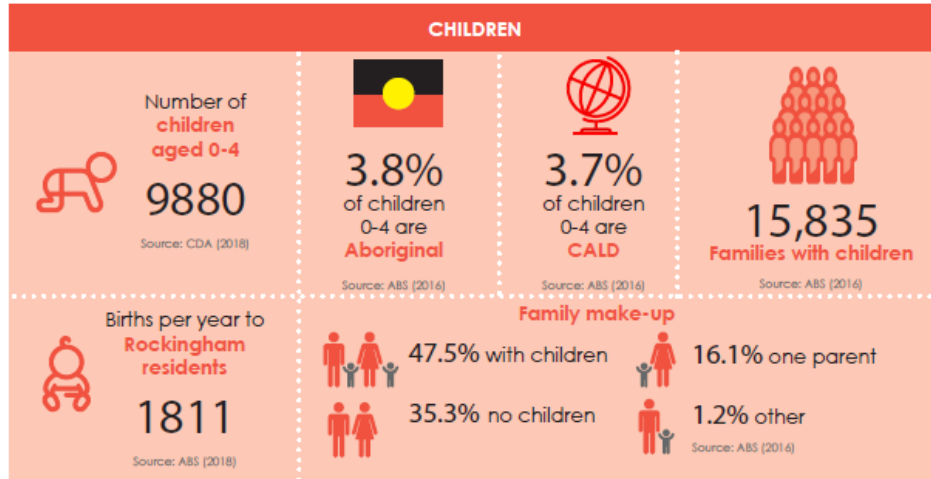
1. **Secure new funding**
2. **Add all state/territory custodian data** for key wellbeing indicators, aligning with the model established for WA. This includes establishment of relevant data sharing agreements and approvals.
3. Establish a robust Indigenous Data Governance structure to enable the appropriate inclusion and application of **data from First Nations children and young people**.
4. Include additional functionality:
 - Secure client data upload function
 - Moveable and expandable display panels
 - Integration of data dashboard and download function
 - Indicator overlay
 - Integration of metadata information
5. Enhance the platform's **data analytics capabilities** through implementation of automated visualisation outputs, such as graphs, maps, and infographics.
6. **Develop community profiles** to effectively communicate data insights.

Call to action

“Recognizing that our decisions, actions, and inactions today, have an intergenerational multiplier effect, such that our conduct today will impact future generations exponentially, and therefore emphasizing that present generations, carry a responsibility towards future generations to act with their interests in mind...”

Zero Draft of the Declaration on Future Generations- United Nations

ROCKINGHAM LOCAL GOVERNMENT AREA DATA SNAPSHOT



Contact



Australian Child and Youth Atlas platform

Website: www.australianchildatlas.com

Contact us: info@australianchildatlas.com

